

WellCAD™

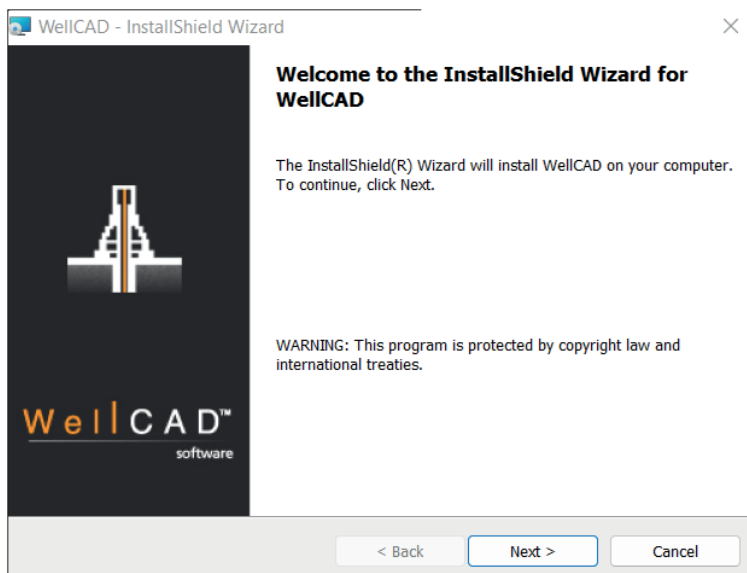
Guidelines for installation and activation

June 2023

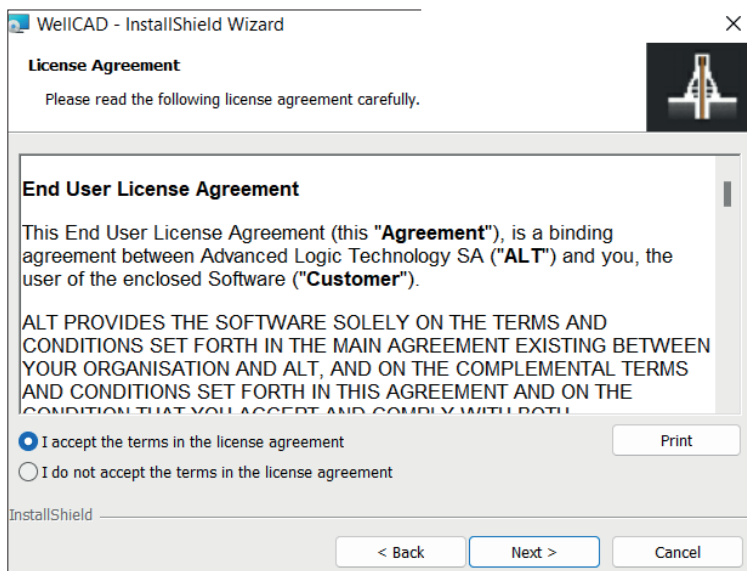
The WellCAD™ setup can be downloaded from the ALT webpage or by using the following [link](#)

Installation

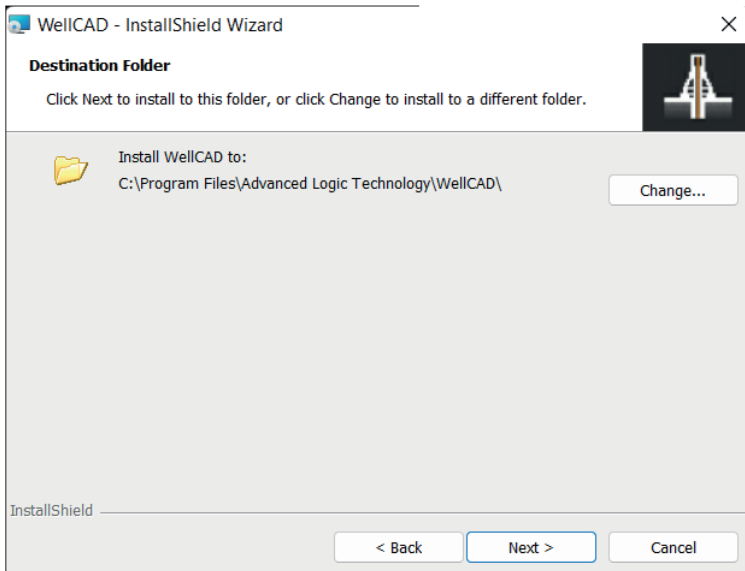
- Run the installer by double left clicking on the downloaded .msi file.
- The InstallShield Wizard will open guiding the user through a sequence of installation steps :



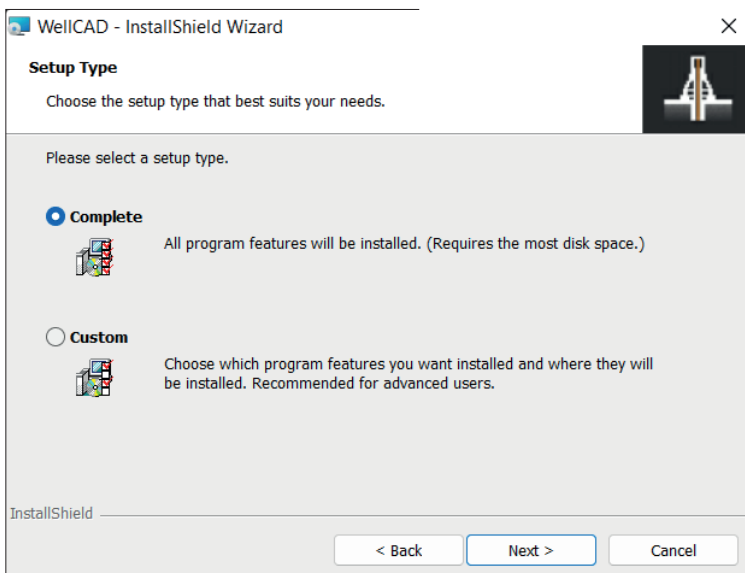
· Click **Next** to start the installation process.



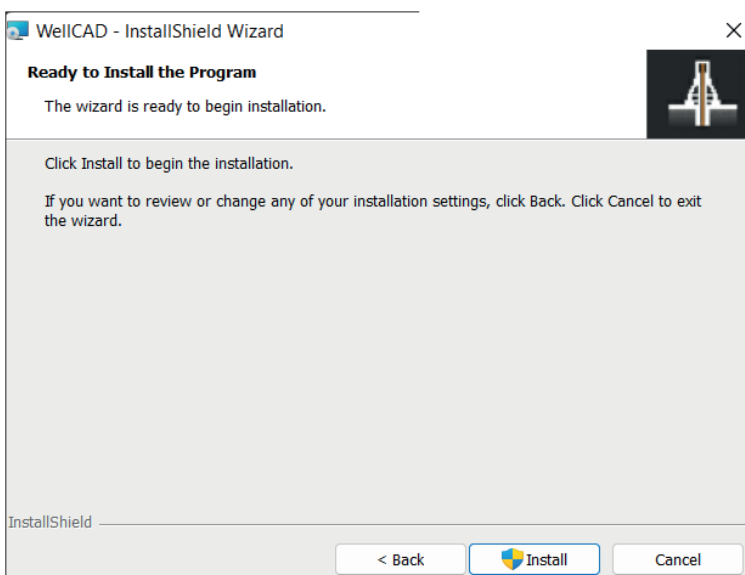
- Read and **accept** the License Agreement.
- Click on **Next** to continue.



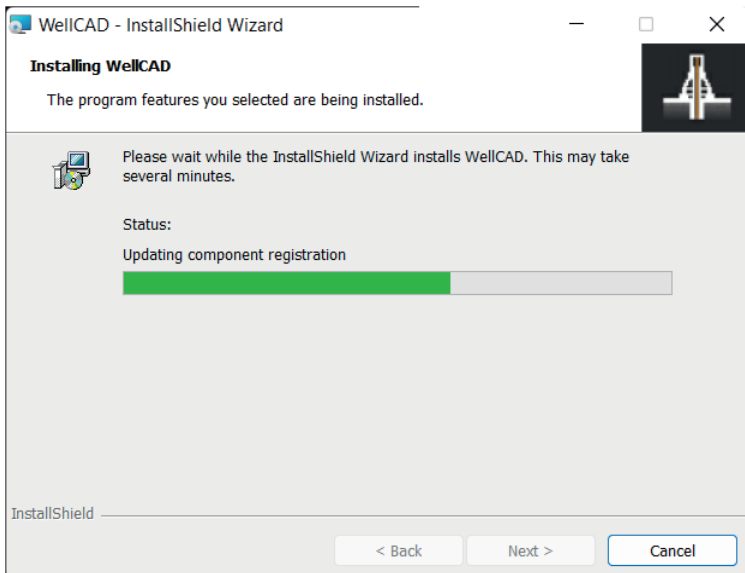
- Select the **installation folder**. Use the Change button if you wish to alter the default installation location.
- **Click the Next button** to continue.



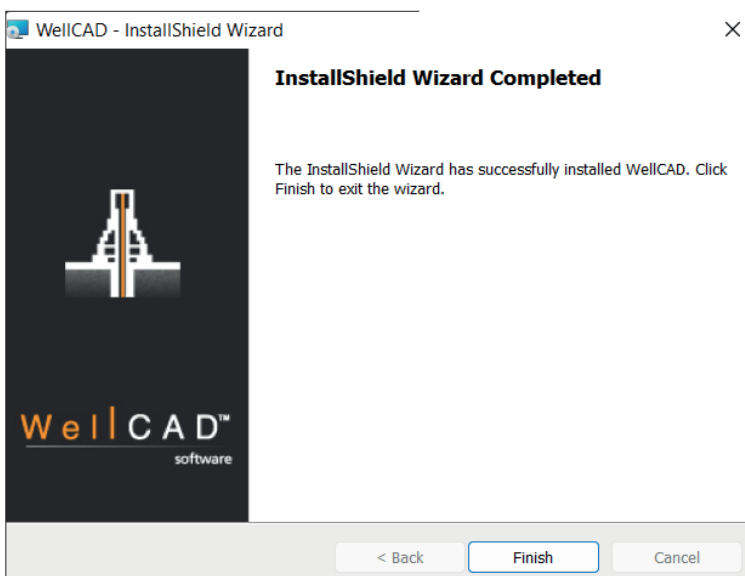
- Select Complete to install help, sample files and other accessories. Choose Custom to enable a selection of components to be installed.
- **Click the Next button** to continue.



- **Click the Install button** to confirm that new software will be installed on your computer.



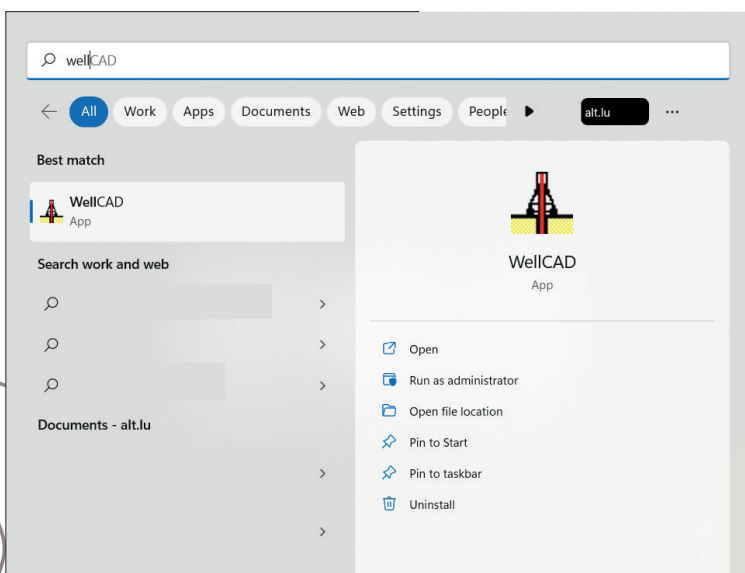
A message box from the installer may be displayed in parallel asking for permission to make changes to your computer. The InstallShield Wizard dialog box will show the progress of the installation. (If you do not see the progress bar moving check for the message box from the installer. It may be hidden behind the dialog box.)



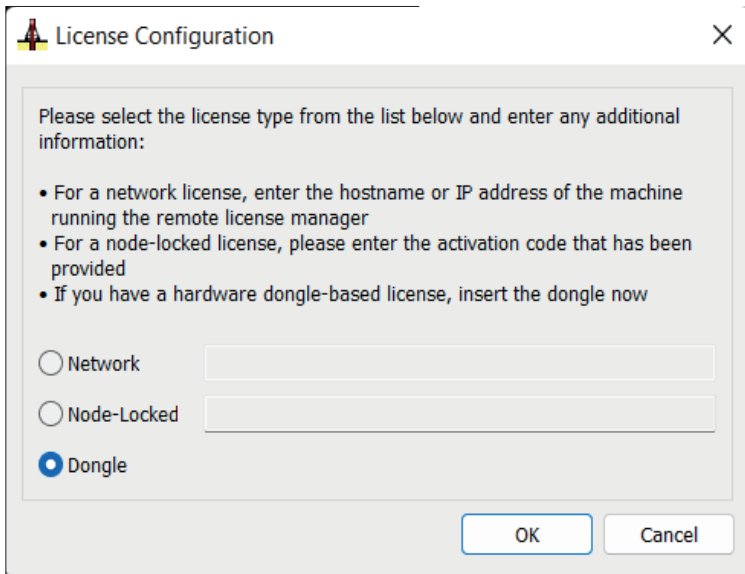
After successful installation **click the Finish button** and continue with the activation of the WellCAD license.

In the case of problems please follow the instructions displayed on screen. If necessary, contact your system administrator or email support@alt.lu for further assistance.

First Time Activation



After you have run the installer open the Windows START menu, open the WellCAD folder and **click on WellCAD**.



· The License Configuration dialog box will be displayed.

Users who received an activation code

- Select the Node-Locked option and **enter (or copy and paste) the activation code** you received from ALT.
- Activation codes are of the format **xxxxxxxx-xxxx-xxxx-xxxxxxxxxxxx**.

Please note, activation codes can only be used once, and activating a license binds it to the computer it is activated on.

Users with a dongle (USB hard lock)

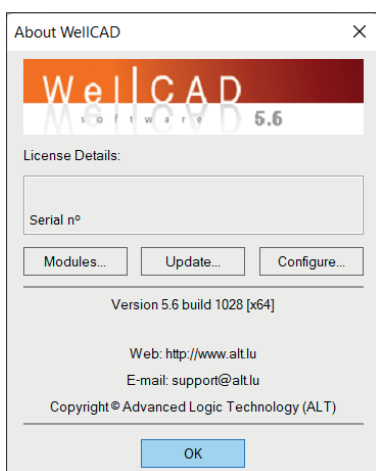
- **Plug the dongle into a USB port** of the computer you are working on. Wait until the red light on the dongle is on.
- In the License Configuration dialog box select the Dongle option and **click OK**.

Updates and Upgrades

Note : The following procedure is only applicable to single user licenses.

- To update a network license please refer to the Guidelines for Network Administrators.
- Upgrading WellCAD with an add-on module or extending a WellCAD subscription will require an update of your existing license. You will be informed by ALT or its partners when the update is ready to be installed.

The following steps are required next



- Ensure your computer is connected to the internet. If you are using a dongle, please ensure it is plugged in.
- Start WellCAD
- Open the *About WellCAD* dialog box from the *Help* menu.
- Click the *Update* button.

WellCAD will connect to the ALT server to check if there is an update waiting for you. If so, a message box will be displayed asking for confirmation to update your license. In case of problems feel free to contact support@alt.lu.