

Slimhole, High Temperature Acoustic Borehole Imager

QL43 ABI™

Technical specifications

Diameter	43mm (1 ¹¹ / ₁₆ "
Length	1.77 m (70")
Weight	10kgs
Max temp	Open hole 125°C (257°F) Cased hole 170°C (338°F)
Max pressure	700 bar (10160 PSI)

Field exchangeable acoustic head*

Acoustic sensor	Fixed transducer and rotating focusing mirror
Focusing	Collimated acoustic beam
Frequency	1.2 MHz - 0.5 MHz
Caliper resolution	0.08mm (0.003")
Deviation sensor	3 axis accelerometer (170°C) APS544-3 axis magnetometer - 3 axis accelerometer (125°C)

Operating conditions

Cable type	Mono, multi-conductor, coax
Compatibility SCOUT/OPAL	Scout / Opal (ALTlogger / Bbox)
Digital data transmission	
Telemetry	Variable baudrate telemetry according to cable length/type & surface system
Logging speed	Variable function of resolution, wireline and surface system
Centralisation	Required
Borehole fluid	Water, water based mud, brine, oil (oil based mud not applicable)

Field exchangeable acoustic head

QL43 ABI HEAD OHCO-L OPEN HOLE & CORROSION

Open hole up to 21" depending on borehole conditions
Corrosion 5½" x 15"
minimum of 5 mm thickness

QL43 ABI HEAD CO-S CORROSION SMALL PIPE DIAMETER

3" x 5½"
minimum of 3 mm thickness

QL43 ABI HEAD CO-XXS CORROSION 2⁷/₈ TUBING

2⁷/₈"
depending on borehole conditions with
a minimum of 3 mm thickness

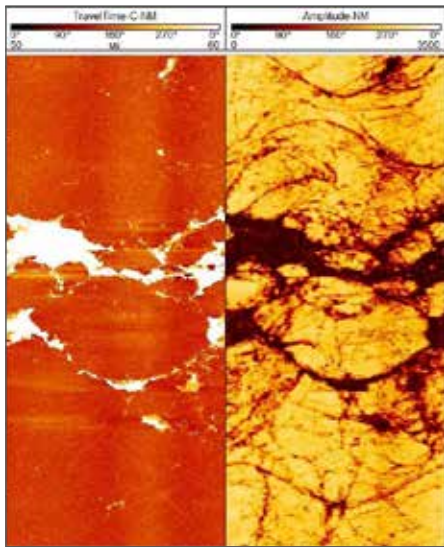
QL43 ABI HEAD CE-L CEMENT (in development)

5½" x 15"

QL43 ABI HEAD CE-S CEMENT SMALL PIPE DIAMETER (in development)

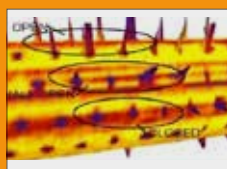
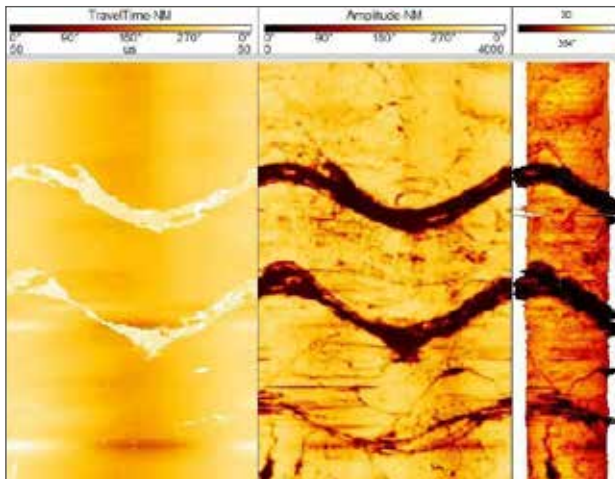
2⁷/₈" x 5½"





Open hole

- Detailed and oriented caliper and structural information
- Borehole deformation (stress field analysis)
- Fracture detection and evaluation
- Breakout analysis
- Lithology and mineralogy characterization (detection of thin beds, determination of bedding dip)
- Rock strength



Perforation position & aperture



Internal/external casing surface imager



Internal casing diameter



External casing diameter

Cased hole

Casing inspection

- Inside & outside diameter
- Casing thickness & corrosion rate
- Scale & hole detection
- Casing defects
- Casing wear & deformation
- Metal loss indicators

Cement evaluation (in development)

- Cement location
- Cement channeling