

## What else is New?

- Main, base and title settings can be copied from log to log(s).
- Import of WITSML files.
- Export of LAS 3.0 format.
- Direct import of pictures into an OLE Log.
- Log titles will repeat when plot is printed on multiple pages.
- Color Palette support for 3rd and 4th component in Cross Plot module.
- Noise reduction process for FWS data.
- License Borrowing dialog box for FLEXLM license users
- ... and much more

## How to upgrade

The upgrade to WellCAD v4.3 is not free. Please contact [sales@alt.lu](mailto:sales@alt.lu) for further information.

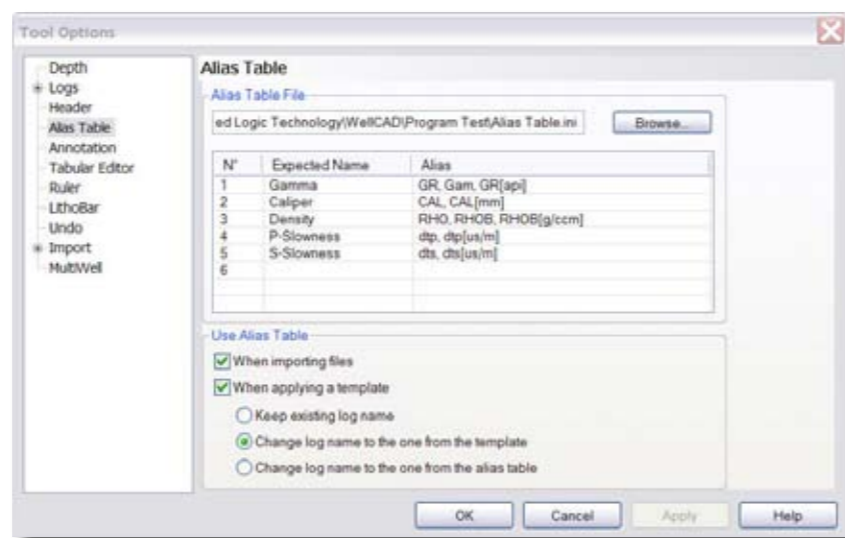
You can download the WellCAD v4.3 from our homepage. Two versions are available: A full version including a set of sample files and context sensitive help, and a light version without samples and help.

After installation of WellCAD v4.3 you will be prompted for an activation code. User who are under a valid WellCAD Maintenance Contract will get this update free of charge.

## Alias Table

With the use of an Alias Table the names or mnemonics of data channels (log titles) can automatically be renamed to standard names expected by templates or databases. Alias Tables can automatically be applied when importing data from files or when a template is loaded.

Alias Tables consist of a user defined Expected or standard name and a customizable list of Aliases or incoming names. Log names found in the Alias list will be renamed.



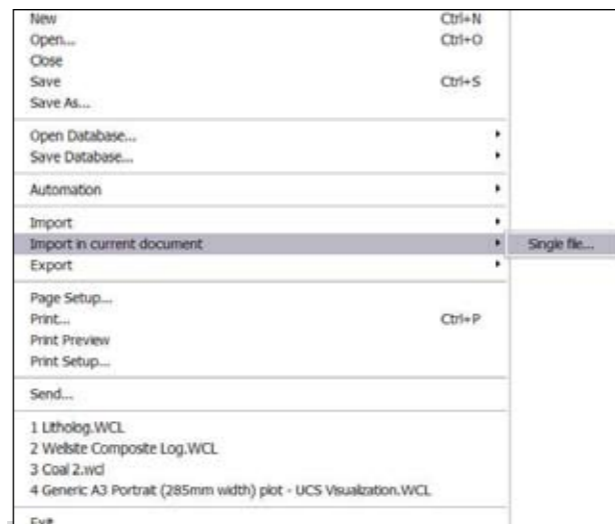
Alias Tables can easily be created and managed in the Tools options panel

The setup of Alias Tables is easy and can be accomplished in the specially designed interface in the Tools Options settings of WellCAD. Experts can edit Alias Tables directly and can manage the use of default unit strings.

## Import Into A Current Plot

If a borehole document is already open the user can select the option to import files or even another borehole document (i.e. a \*.WCL file) into the current document.

If the log titles and the log type of incoming and existing data columns match the imported data set will automatically added to the existing one.



## In this issue

▶ MultiWell Enhancements  
page 1

▶ Breakout Log  
page 2

▶ Well Log Shading  
page 2

▶ Tabular Editor  
page 2

▶ New Statistic Tools  
page 3

▶ Alias Table  
page 4

▶ Import Into Current Plot  
page 4

▶ What Else is New  
page 4

▶ How to upgrade  
page 4

# WellCAD

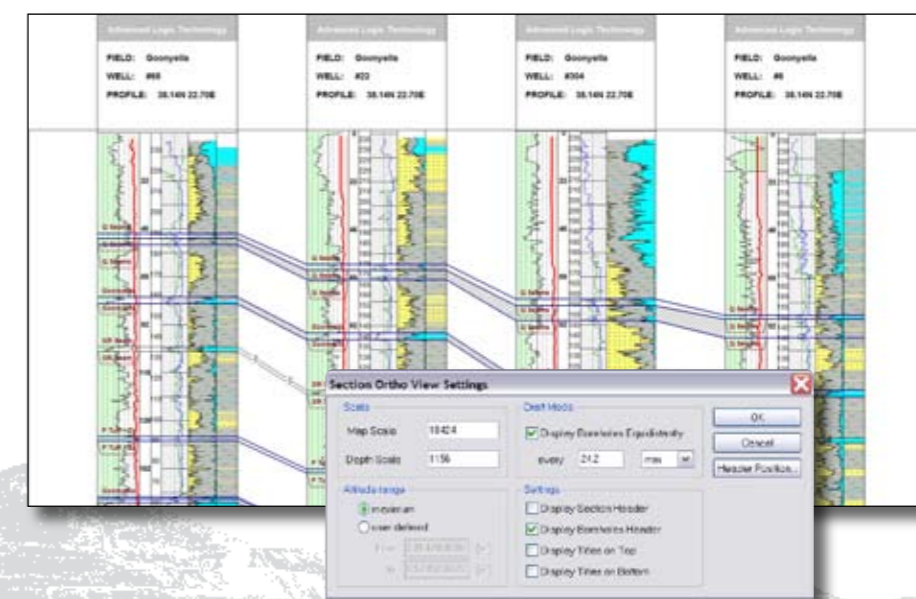
Newsletter N°8, autumn 2008

Dear WellCAD User,

Another year of hard work lies behind us and we are glad to inform you that WellCAD version 4.3 is ready and waiting for your use. The long awaited log type to pick and evaluate vertical features like tensile fractures and breakouts has been added. A number of other features have been added whose only goal is to make your work with WellCAD even easier and enhance the value of your data. Along with this release of WellCAD comes our new Online Education service. If you would like to learn more, feel free to contact us.

## MultiWell

The MultiWell add-on module now supports the Longitude / Latitude coordinate system as well as the UTM grid. We also added the option to display individual header and footer sections for each well. These headers can be linked to the original document header by matching keywords. Another useful addition is the Draft View option allowing the user to display the well equidistantly on a cross section.



Zoning de Solupla Bât A  
route de Niederpallen

L-8506 Redange

Luxembourg

Tél. 352 23 649 289

36th Floor, Menara Maxis  
Kuala Lumpur City Centre

50088 Kuala Lumpur

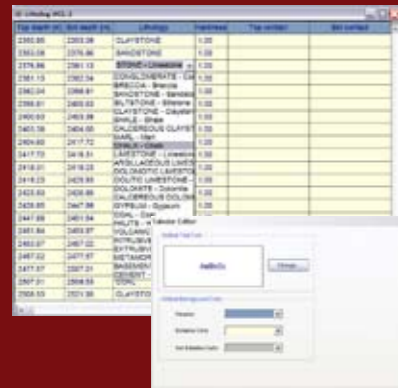
Malaysia

Tel. + 60 3 2615 7261

[www.alt.lu](http://www.alt.lu)

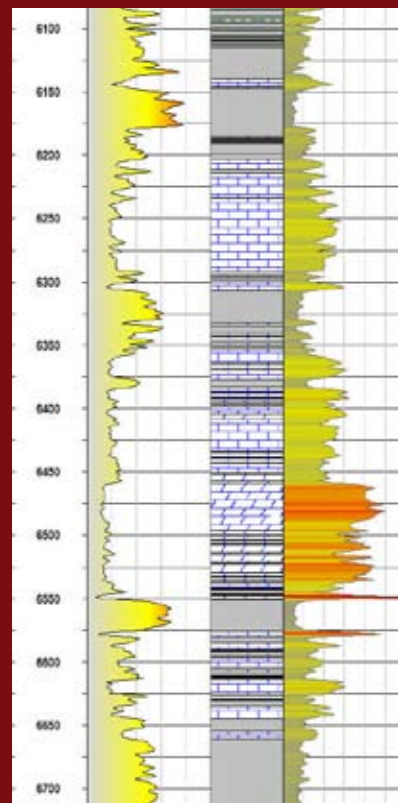
## Tabular Editor

The Tabular Editor functionality has been extended to display a drop down box when data can be selected from dictionaries. The layout of column headers and cells as well as the font style can be altered and stored in the default settings.

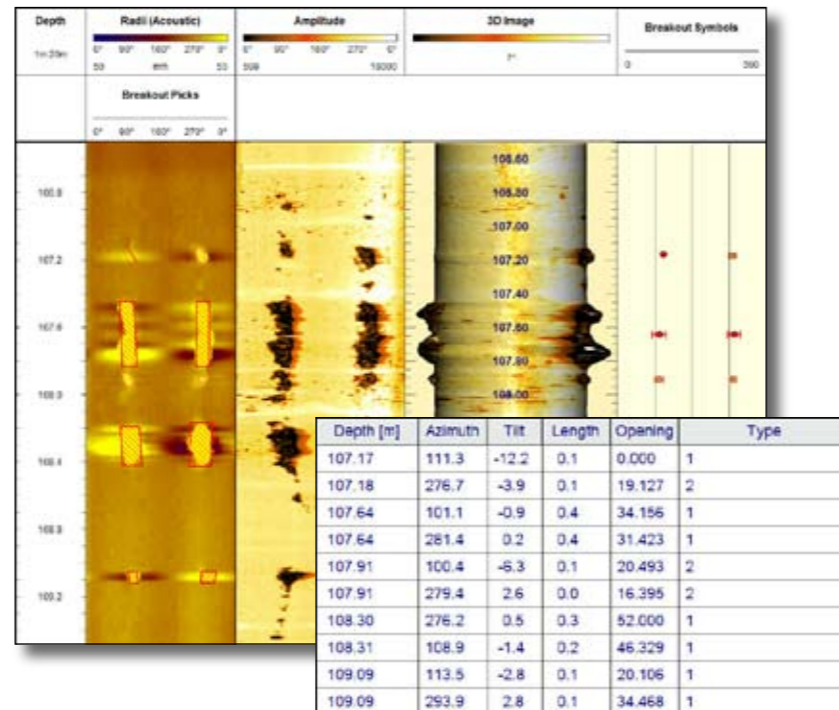


## Well Log Shading

New VDL shading options are available for the Well, Mud and Interval Log. Color palette shading can be applied as horizontal or vertical gradient shading.

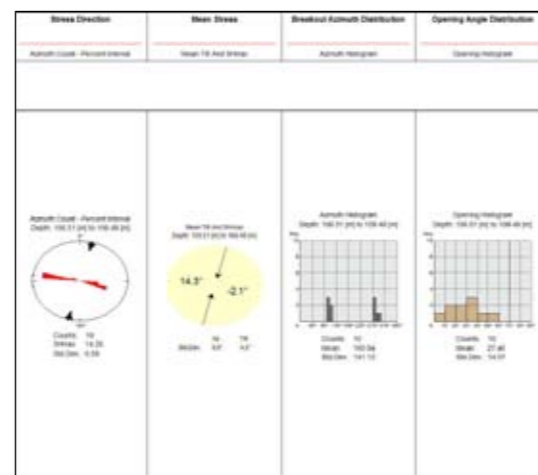


## Breakout Log



Breakout Log in Pick and Symbol mode ;  
Tabular Editor showing the data recorded with each pick.

The new Breakout log type allows users to fit lines and polygons to an image and pick vertical features such as borehole breakouts or tensile fractures interactively. With each pick the Depth, Azimuth, Tilt against the borehole axis, Length of the feature and Opening angle will be recorded and stored in the data repository of the log. User defined attribute classes can be used to describe and rank the picked features.



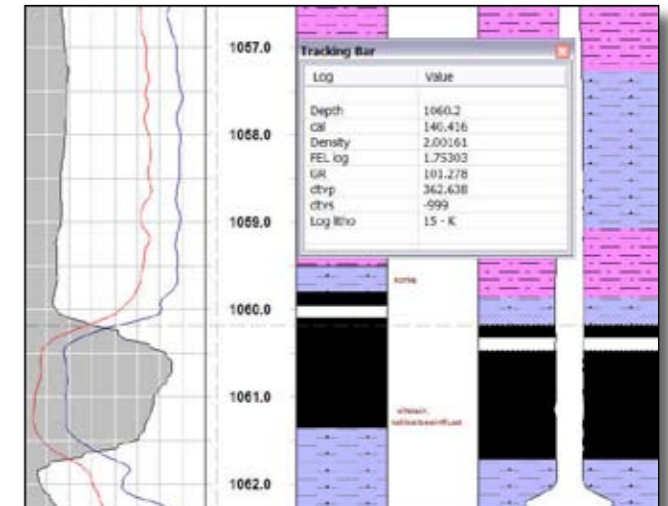
Different histograms based on the Breakout Log data

The new addition to the Image & Structure Processing module comes with tools to perform interval statistic or to display stress direction and the distribution of breakout parameters.

## New Statistic Tools

### Tracking Bar

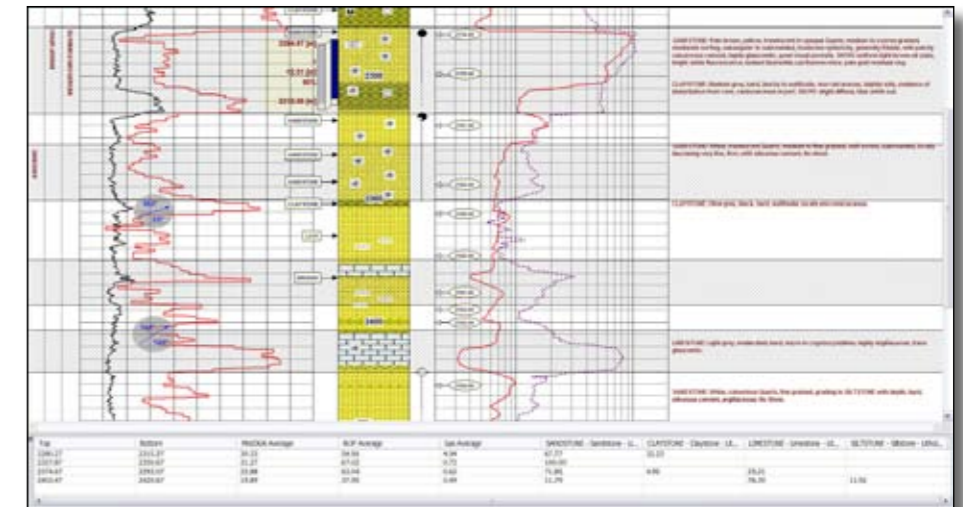
To allow detailed examination of borehole data we added the Tracking Bar, a floating or docked dialog box that stays on top of your borehole document providing an overview of the data values of selected logs updated in real time as you move the cursor along your data columns. Just a simple click is needed to add or remove logs from the list.



Floating Tracking Bar stays on top of the document providing data values at cursor's depth

### Statistics Bar

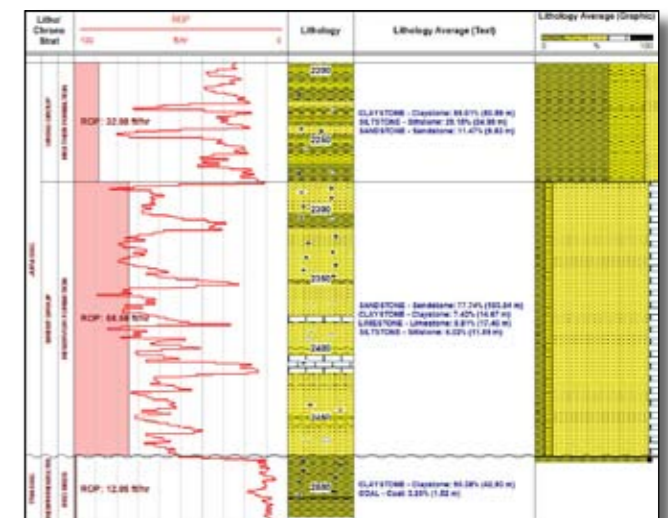
When the Statistics Bar is displayed the user can interactively create zones on top of the borehole document and retrieve valuable statistical information from the bar's list view for each of these zones. The user can define the logs to investigate and the statistical parameters to be computed. All values can be exported into an ASCII file.



Statistics Bar docked to the bottom of a document providing user defined statistical values for each interval

### Extended Block Process

New options added to the Block Process enable users to select Strata Logs as interval reference or determine zone borders automatically from a Marker Log. The list of supported log types has been extended. All major log types can now be used for interval statistic calculation. In addition to a graphical presentation of the results a text output is now available.



Blocked Well and Lithology Logs showing text and graphic output of average values calculated over zones given by the Litho Stratigraphy log.